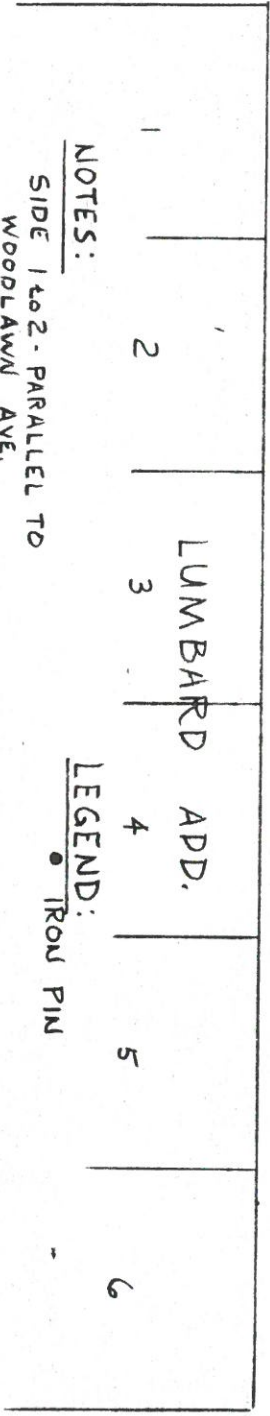
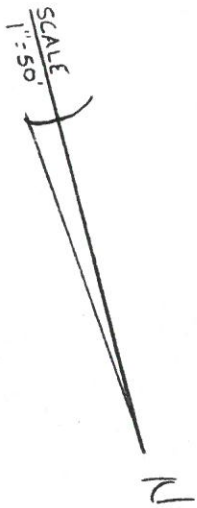
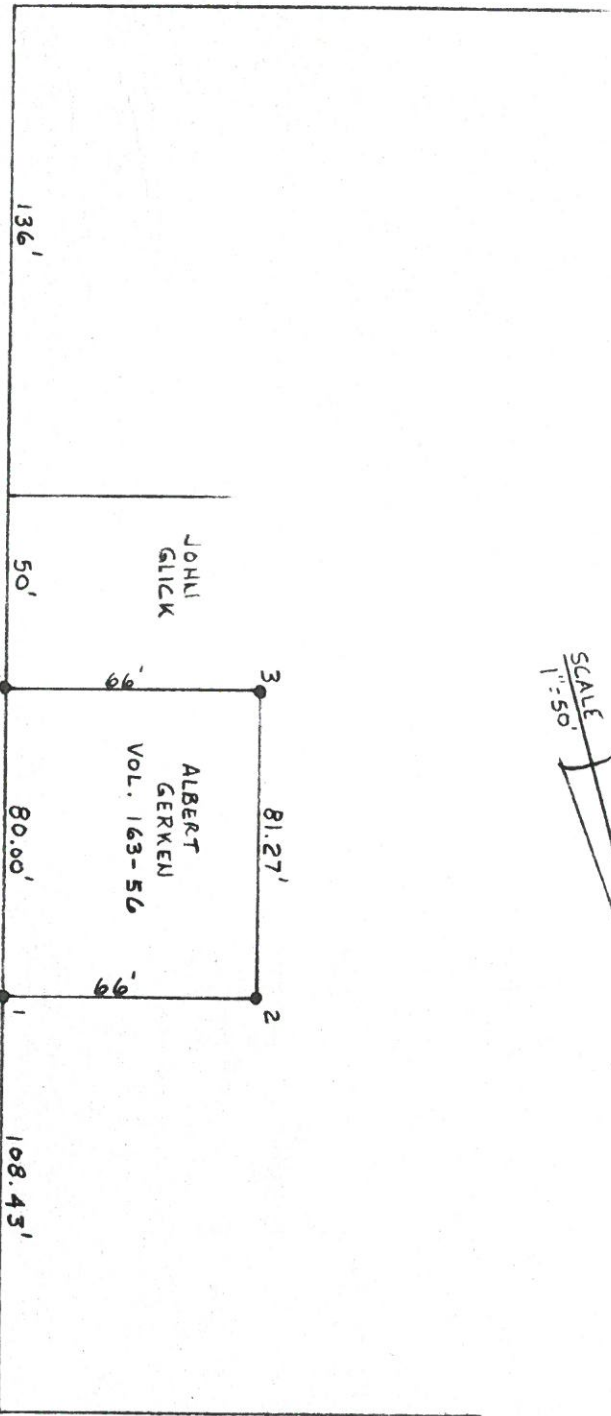


HIGH ST 42.5' R/W



NOTES:

SIDE 1 to 2 - PARALLEL TO
WOODLAWN AVE.
SIDE 2 to 3 - PARALLEL TO
WOODLAWN CT.
INTERIOR ANGLE 3 - 89°24'

LEGEND:

● IRON PIN

Old Woodlawn from Corner

WOODLAWN AVE 60' R/W